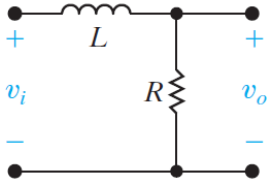


# ECE222

## Quiz 7

To get full credit, show all your work.

- a) Find the transfer function:  $H(s) = \frac{V_o}{V_i}$  for the following circuit.



- b) State the locations of all the poles and zeros. Include any non-finite locations.

- c) Assuming values of  $L = 10mH$  and  $R = 10\Omega$  and an input signal  $v_i(t) = 10\cos(1000t + 25^\circ)$  determine the steady state output  $v_o(t)$ .